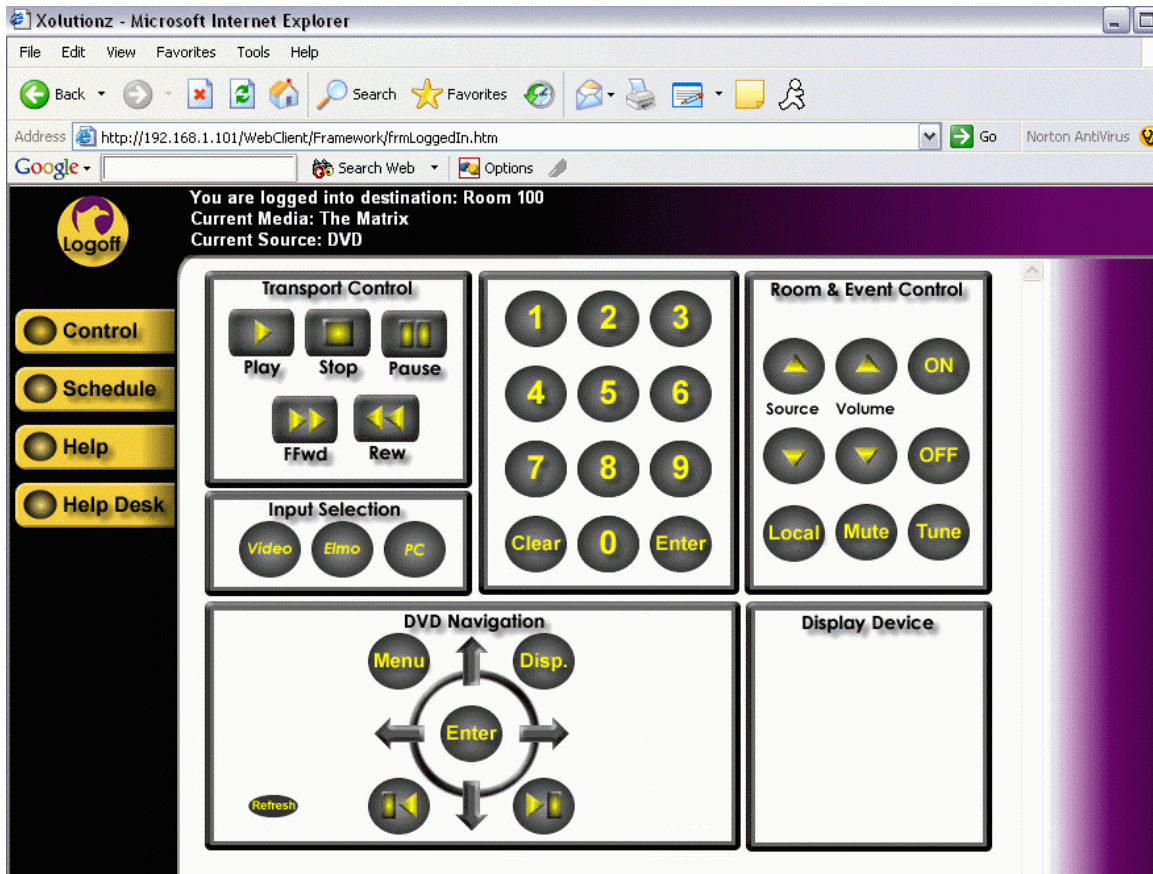




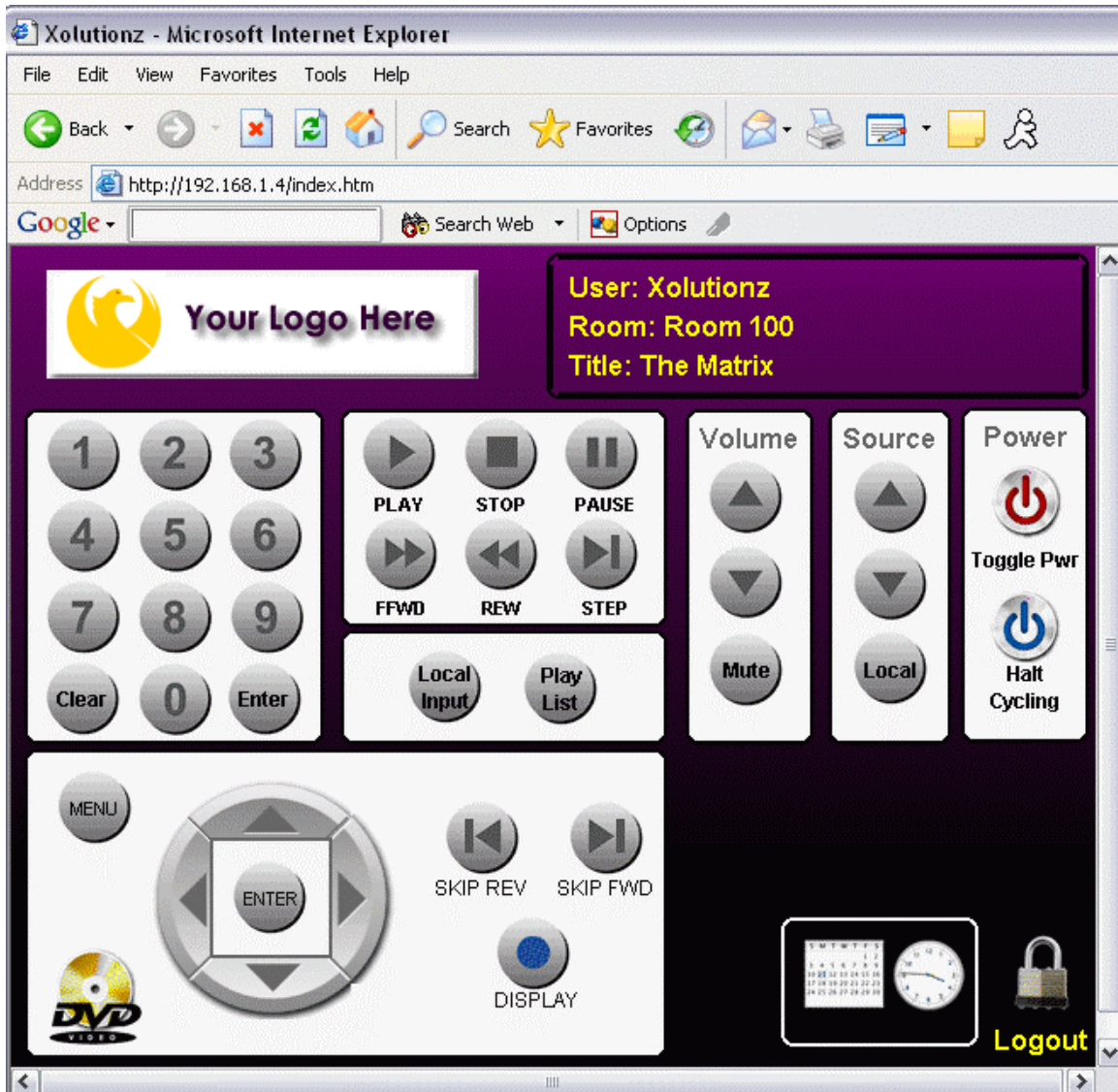
Phoenix³² DVD Control Methods

When controlling DVD events using the XGen Web Client, context sensitive controls will activate on the client machine if a DVD event is active to the room, as follows:



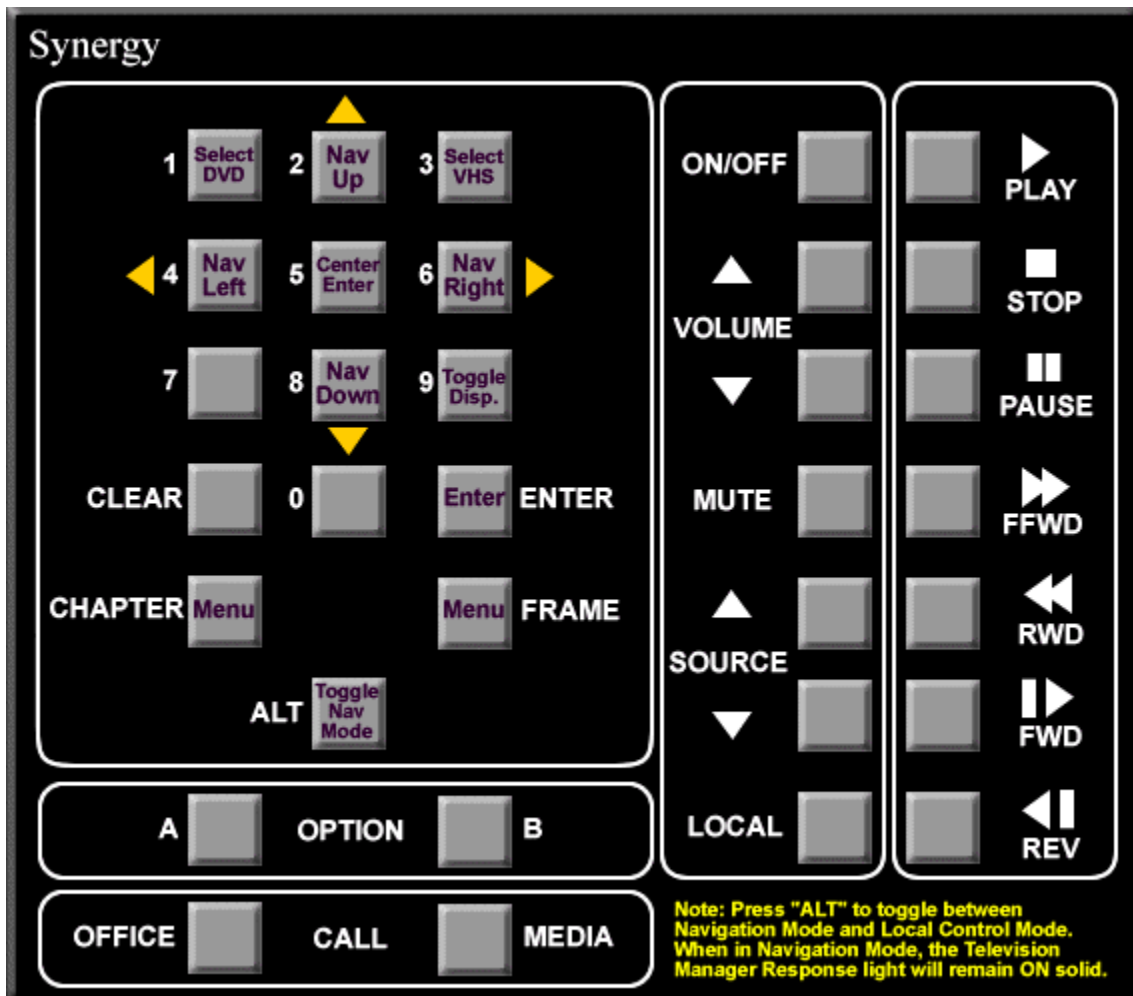


When controlling DVD events using the G1 Web Client, context sensitive controls will activate on the client machine if a DVD event is active to the room, as follows:





When controlling DVD players using the CT5 handheld remote, users toggle between Navigation Mode and Local Control Mode using the "ALT" button. The Response Light on the Television Manager indicates the control mode. When in Navigation Mode, the buttons on the CT5 map as follows (DVD control capabilities are shown on the button labels):





The CT5 button map is further explained below:

User Command while not in Navigation Mode		Control Result
Digit 0		Digit 0
Digit 1		Digit 1
Digit 2		Digit 2
Digit 3		Digit 3
Digit 4		Digit 4
Digit 5		Digit 5
Digit 6		Digit 6
Digit 7		Digit 7
Digit 8		Digit 8
Digit 9		Digit 9
Clear		Clear button sequence
Enter		Enter
Chapter		No effect
Frame		No effect
Alt		Enter Navigation Mode

User Command while in Navigation Mode		Control Result
Digit 0		No effect
Digit 1		Select DVD (DVD/VHS Combo only)
Digit 2		Navigate Up
Digit 3		Select VHS (DVD/VHS Combo only)
Digit 4		Navigate Left
Digit 5		Navigate Center (Select)
Digit 6		Navigate Right
Digit 7		No effect
Digit 8		Navigate Down
Digit 9		Toggle counter display
Clear		No effect
Enter		Enter
Chapter		Menu
Frame		Menu
Alt		Exit Navigation Mode